

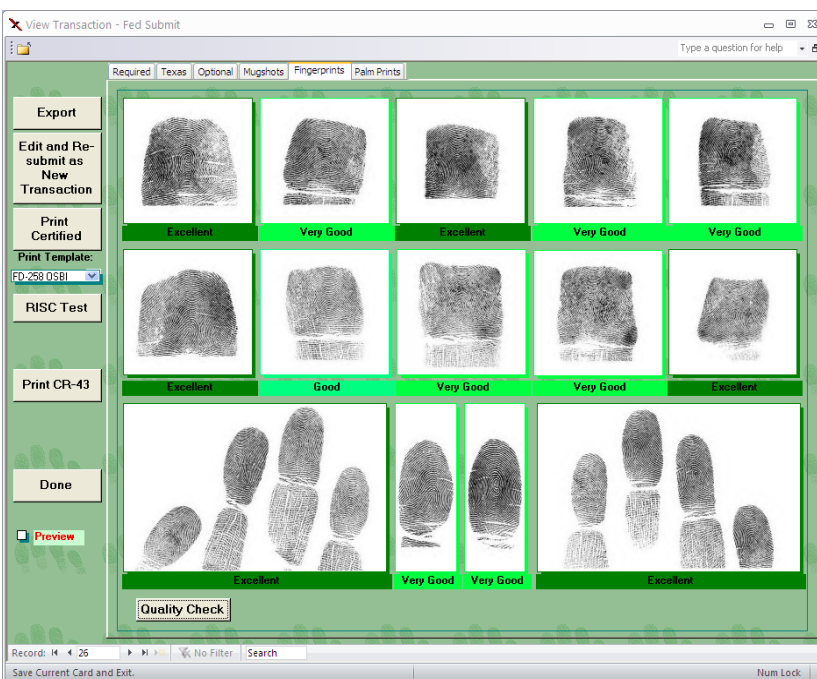
# Fed Submit™ (Criminal)

## Overview

Mentalix's Fed Submit (Criminal) product is used by law enforcement agencies that submit criminal fingerprint cards and arrest records to outside organizations such as the FBI and/or state agencies. Submitting electronically typically allows booking personnel to verify a suspect's identity within minutes – before having to release the suspect. Fed Submit's adaptability, scalability and affordability enable even very small law enforcement agencies to obtain an electronic fingerprint submission system.

## Benefits

- Allows those with budget issues to start with low-cost card scanning; live scan can be added later.
- Streamlines transaction administration, featuring fingerprint acquisition, submission and tracking.
- Reduces receipt of results from months (when cards are mailed to outside agency) to minutes.
- Permits a choice between complete solutions or individual components.
- Can be customized to meet a state's special requirements – for example, Fed Submit (TX) is tailored for submitting to Texas DPS and includes additional, state-specific features such as two-finger lookup & encrypted Internet submission. Contact Mentalix to check availability for additional states.



Fed Submit (Criminal) allows you to perform a quality check on the fingerprint images prior to submitting transactions. The software highlights the print areas in colors to indicate whether the fingerprints should be rolled again to avoid rejection due to poor image quality by the destination agency.

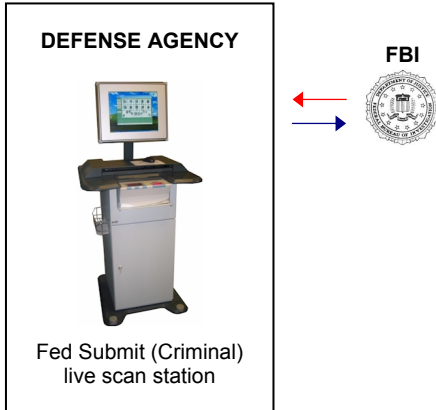
## Features

- FBI-certified live scan & card scan support
- Fingerprint & palm print capture available
- 500 ppi FBI certification
- FBI-certified WSQ compression
- FBI-certified card printing on blank card stock with CardPrint add-on & supported printer
- EBTS formatting
- Fingerprint quality check
- Fingerprint sequence check (with live scan)
- Stores 70,000+ transactions
- Full text search capability
- Transaction reports
- Supports submission of transactions via SMTP or FTP
- Customized data entry & field checks specific to criminal & applicant cards
- **Fingerprint-based matching capability within local database** for searches or inmate release verification
- Photo/mug shot capture (with add-on) & import
- Integration with many local AFIS matching systems & JMS/booking systems
- Add-ons: certified printing, swipe card reader, Admin stations, mug shot

## Flexibility

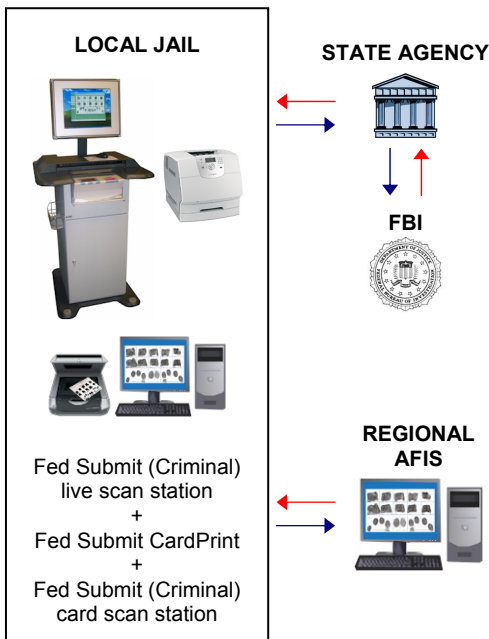
With options for add-ons and multiple stations, Fed Submit (Criminal) can accommodate a variety of needs. Typical configuration examples appear below.

### Example 1: Send directly to FBI



### Example 2: Send to state agency

This configuration uses a live scan station for adult criminal booking and a card scan station for processing juveniles; both send electronic fingerprints to the state agency and to a regional AFIS. Fed Submit CardPrint is used to print certified cards for civilian applicants.



## Fed Submit Specifications

### Minimum Requirements

- |                 |  |
|-----------------|--|
| <b>Computer</b> | <ul style="list-style-type: none"> <li>• Mid- to high-end range Intel (Core i5/i7 2.5+ GHz) or similar AMD processor, 4 GB memory</li> <li>• PCI-Express video card with 256 MB or more video RAM, capable of 1280 x 1024 resolution</li> <li>• For desktop PC: 20-inch or larger LCD flat-panel monitor; must be SXGA (Super Extended Graphics Array) capable or better</li> <li>• For notebook: 15-inch or larger LCD flat-panel display with SXGA or WSXGA capability</li> <li>• Microsoft SQL Server 2008 R2 Express</li> <li>• Microsoft Windows XP Professional SP3</li> <li>• Microsoft Office 2007 SP3 or Office 2010 (any version)</li> <li>• Adobe Acrobat Reader 9 or later</li> <li>• For remote support: Installed LogMeIn client</li> <li>• UPS power backup system (not required for notebook)</li> </ul> |
|-----------------|--|

- |                     |   |
|---------------------|---|
| <b>Connectivity</b> | <ul style="list-style-type: none"> <li>• TCP/IP network connection</li> <li>• For live scan: FireWire (IEEE 1394) port with cable. For desktop, use 6P-6P (standard) cable; for notebook, use 6P-4-P cable. Note: If your computer requires an add-on adapter card to make a FireWire port available, use an Adaptec or SIIG FireWire adapter card.</li> <li>• For card scan: USB 2.0 port and cable</li> </ul> |
|---------------------|---|

- |                  |  |
|------------------|--|
| <b>Live Scan</b> | <p>Supported live scanner (connects via FireWire):</p> <ul style="list-style-type: none"> <li>• Fed Submit L SCAN Guardian</li> <li>• Fed Submit LITE-Ue (with palm print capture)</li> <li>• Fed Submit L SCAN 500P (with palm print capture)</li> <li>• Fed Submit L SCAN 1000P (with palm print capture)</li> </ul> |
|------------------|--|

- |                  |  |
|------------------|--|
| <b>Card Scan</b> | <p>Supported flatbed card scanner (connects via USB):</p> <ul style="list-style-type: none"> <li>• Epson Perfection 4990 or V700 (PHOTO or PRO)</li> </ul> |
|------------------|--|

- |                      |  |
|----------------------|--|
| <b>Card Printing</b> | <p>Supported printer with USB 2.0 (local) or TCP/IP LAN (network):</p> <ul style="list-style-type: none"> <li>• Lexmark T650dtn</li> </ul> |
|----------------------|--|

### Maintenance & Installation Services

- |                             |  |
|-----------------------------|--|
| <b>Software Maintenance</b> | Phone/e-mail/remote support (weekdays 8am-5pm Central Time, excluding holidays) for Fed Submit software, plus maintenance releases (corrections & updates) |
|-----------------------------|--|

- |                                  |  |
|----------------------------------|--|
| <b>24x7 Support Registration</b> | Access to 24x7 per-incident support per site. Per-incident pricing is \$100/first 15 minutes + \$50/each additional 15-minute increment and only applies to after-hours support. |
|----------------------------------|--|

- |                                       |  |
|---------------------------------------|--|
| <b>Live Scan Hardware Maintenance</b> | Depot repair/replacement of live scanner for problems that arise during normal, wear-and-tear use of equipment |
|---------------------------------------|--|

- |                                    |   |
|------------------------------------|---|
| <b>Installation &amp; Training</b> | On-site system setup and training by Mentalix |
|------------------------------------|---|

### Contracts

- |                        |                             |
|------------------------|-----------------------------|
| <b>GSA Schedule 84</b> | MAS Contract # GS-07F-0014V |
|------------------------|-----------------------------|